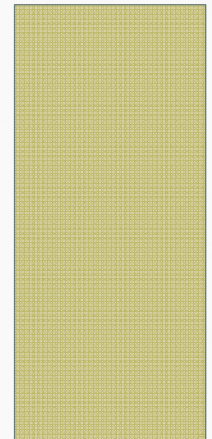


JUVENILE DIVERSION  
PROGRAMS:  
HIGH-RISK YOUTH

CHELSEY WARNER



# BACKGROUND

- What is juvenile diversion?
- Why do MN counties have diversion?
  - Juvenile Justice and Delinquency Prevention Act
  - Statutes
  - Benefits
- Who enforces programs?

# LABELING THEORY

- What is it?
  - When a youth is labeled as a delinquent, they are more likely to repeat delinquent actions
- Deviant acts are framed by the wealthy for the poor, by older people for younger people, by ethnic majorities for minority groups.

# RISK-RESPONSIVITY PRINCIPLE

- Lowest-risk youth should receive the fewest formal interventions and services
- Highest-risk youth should receive the most formal interventions

# HIGH-RISK YOUTH BEHAVIORS

- Behaviors:
  - Violence
  - Substance Abuse
  - Risky Sexual Behaviors
- Individual Level:
  - Low Self-Esteem
  - Negative Peer Groups
  - Low School Engagement
- Familial:
  - Lack of family support
  - Low parental monitoring
- Extra familial:
  - Negative school climate
  - Poor neighborhood quality
  - Low socioeconomic status

# HIGH-RISK YOUTH

- Participants were more likely to:
  - Represent communities of color
  - Receive free or reduced priced lunch
  - Live in a household with just their mother or other relatives
  - Report feeling angry, irritable
  - Acting without thinking
  - Using alcohol and drugs
- Participants were less likely to:
  - Spend time doing homework or studying

# DATA

- Minnesota Department of Public Safety Office of Justice Programs
  - “Minnesota Juvenile Diversion: A summary of Statewide Practices and Programming”
  - County level
- United States Census American Fact Finder
  - 2012 ACS 5-year estimates
    - Poverty
    - Population
    - Race

# METHODS: OFFENSES (DEPENDENT)

Least Severe Offenses ←————→ Most Severe Offenses

Class Offenses	Drug Offenses	Property Offenses	Violent Offenses
Smoking	Marijuana Use	Shoplifting	Arson
Alcohol	Marijuana Possession	Theft	Assault
Curfew	Other drugs (not marijuana) use	Checks/Forgery	Bullying
Runaways	Other drugs (not marijuana possession)		Disorderly Conduct
Truancy	DUI & DWI		Animal Cruelty
			Criminal Sexual Conduct



# CREATION OF HIGH-RISK YOUTH VARIABLE (INDEPENDENT)

- $$\frac{(100 - \% \text{ white}) \times (\% \text{ below poverty line}) \times (10-19 \text{ population})}{1,000}$$

- This created a range from .17 and 19.4
- How do these variables interact?

# HYPOTHESES

- **Hypothesis One:** Counties with a large number of high-risk youth will **not** be more likely to target class offenses than counties with a smaller number of high-risk youth.
- **Hypothesis Two:** Counties with a large number of high-risk youth will be more likely to target drug offenses than counties with a smaller number of high-risk youth.
- **Hypothesis Three:** Counties with a larger number of high-risk youth will be more likely to target property offenses than counties with a smaller number of high-risk youth.
- **Hypothesis Four:** Counties with a large number of high-risk youth will be more likely to target violent offenses than counties with a small number of high-risk youth.

# HYPOTHESIS ONE

HIGH-RISK YOUTH & CLASS OFFENSES

# HIGH-RISK YOUTH & CLASS OFFENSES

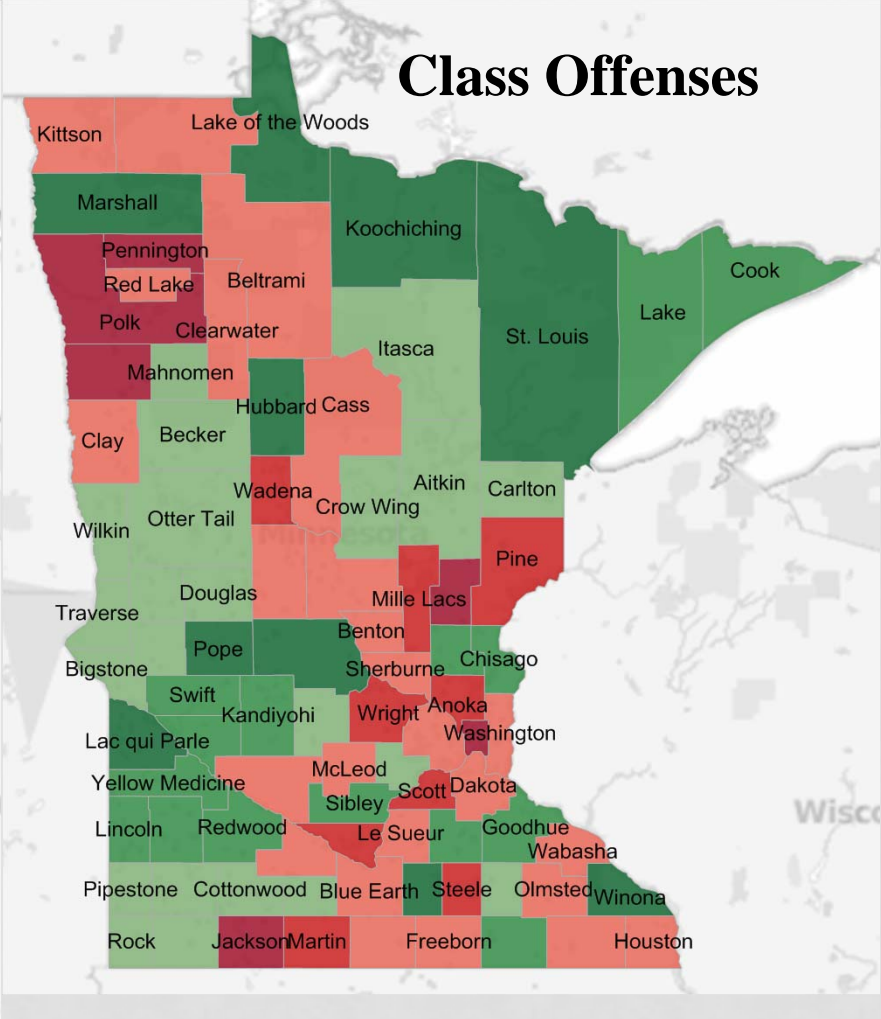
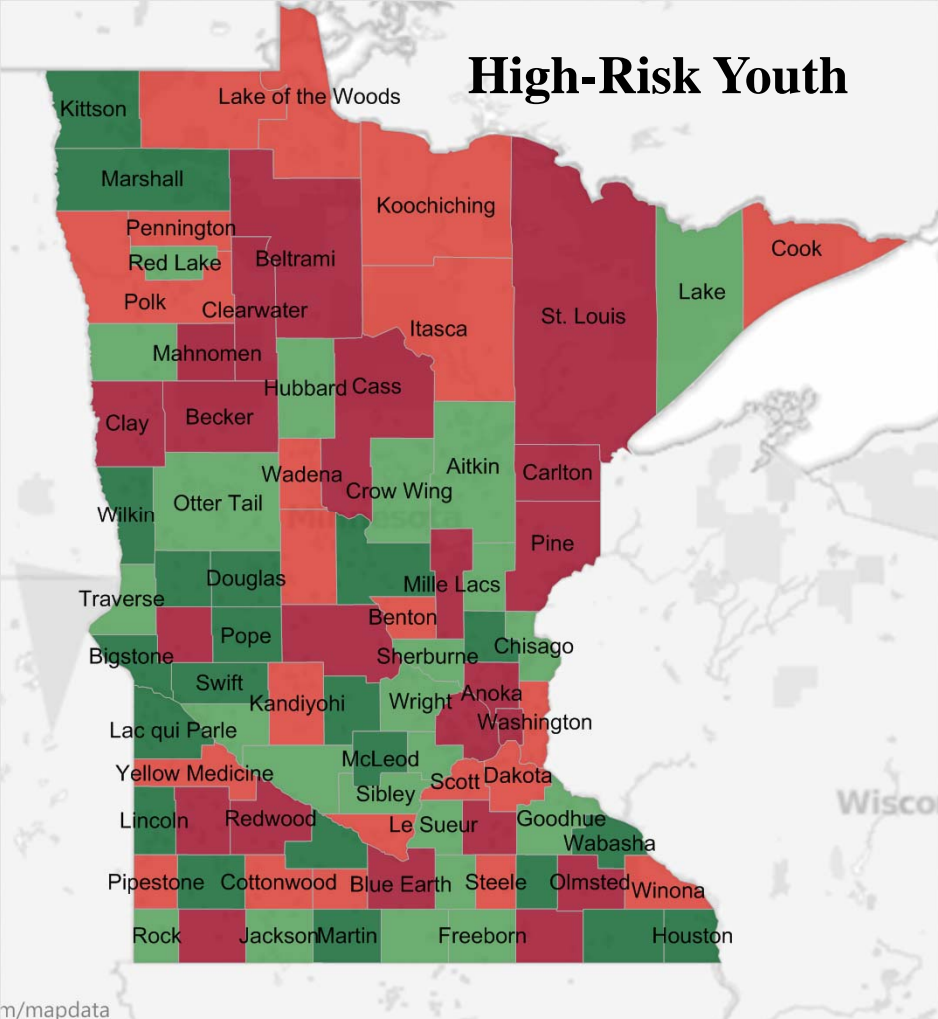
**Class Offenses and High-Risk Youth**

		High-Risk Youth				Total
		Low Risk	Some Risk	Moderate Risk	High Risk	
How many class offenses does your program target?	No Class Offenses	0	0	2	1	3
	% High-Risk Youth	0.0%	0.0%	10.0%	4.8%	3.8%
1 Class Offense		3	5	3	4	15
	% High-Risk Youth	16.7%	23.8%	15.0%	19.0%	18.8%
2 Class Offenses		7	6	4	5	22
	% High-Risk Youth	38.9%	28.6%	20.0%	23.8%	27.5%
3 Class Offenses		7	6	5	7	25
	% High-Risk Youth	38.9%	28.6%	25.0%	33.3%	31.3%
4 Class Offenses		1	1	4	3	9
	% High-Risk Youth	5.6%	4.8%	20.0%	14.3%	11.3%
5 Class Offenses		0	2	1	1	4
	% High-Risk Youth	0.0%	9.5%	5.0%	4.8%	5.0%
6 Class Offenses		0	1	1	0	2
	% High-Risk Youth	0.0%	4.8%	5.0%	0.0%	2.5%
Total		18	21	20	21	80
	% High-Risk Youth	100.0%	100.0%	100.0%	100.0%	100.0%

\*Correlation is not significant at the 0.05 level<sup>a</sup>

a. \*\*Somers'd Value: .036

# HIGH-RISK YOUTH & CLASS OFFENSES



m/mapdata

# HYPOTHESIS TWO

HIGH-RISK YOUTH & DRUG OFFENSES

# HIGH-RISK YOUTH & DRUG OFFENSES

Drug Offenses and High-Risk Youth

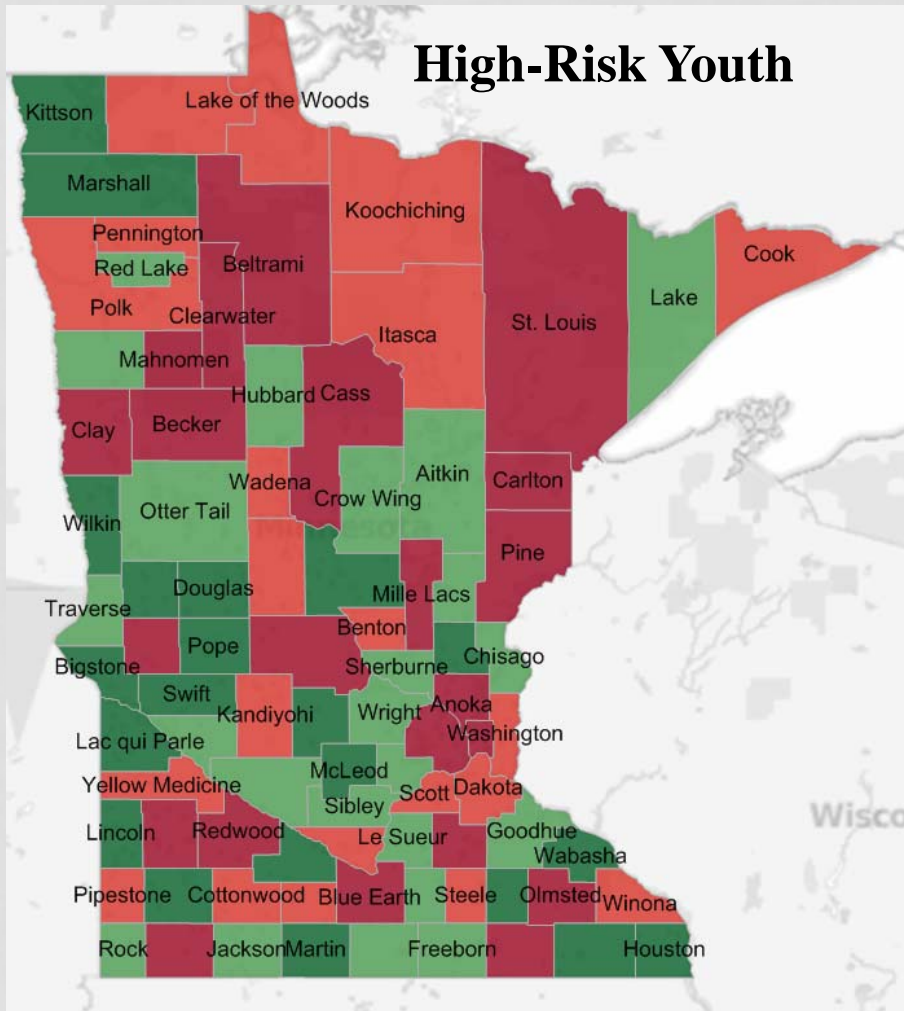
		High-Risk Youth				Total
		Low Risk	Some Risk	Moderate Risk	High Risk	
How many drug offenses does your program target?	No Drug Offenses	4	3	4	4	15
	% High-Risk Youth	22.2%	13.6%	20.0%	19.0%	18.5%
1 Drug Offense		6	9	9	5	29
	% High-Risk Youth	33.3%	40.9%	45.0%	23.8%	35.8%
2 Drug Offenses		8	8	6	12	34
	% High-Risk Youth	44.4%	36.4%	30.0%	57.1%	42.0%
3 Drug Offenses		0	2	1	0	3
	% High-Risk Youth	0.0%	9.1%	5.0%	0.0%	3.7%
Total		18	22	20	21	81
	% High-Risk Youth	100.0%	100.0%	100.0%	100.0%	100.0%

\*Correlation is not significant at the 0.05 level<sup>a</sup>

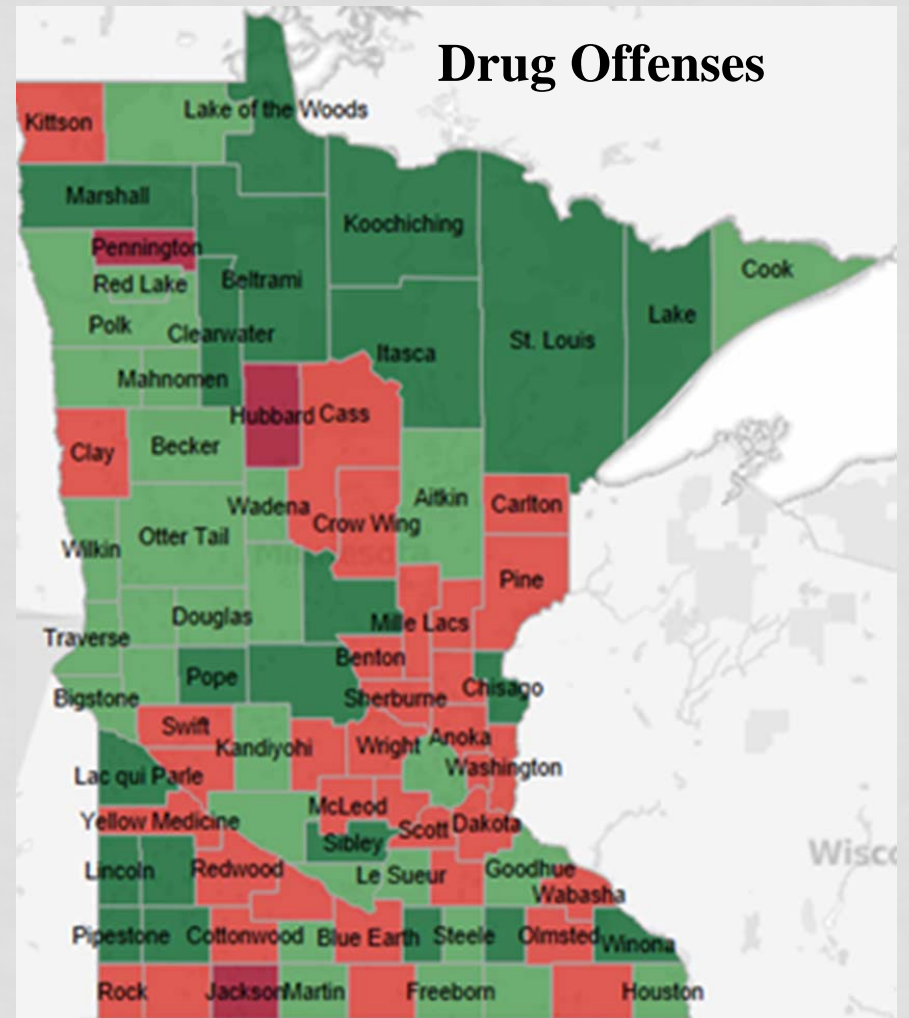
a. \*\*Somers'd Value: .036

# HIGH-RISK YOUTH & DRUG OFFENSES

## High-Risk Youth



## Drug Offenses





# HYPOTHESIS THREE

HIGH-RISK YOUTH & PROPERTY OFFENSES

# HIGH-RISK YOUTH & PROPERTY OFFENSES

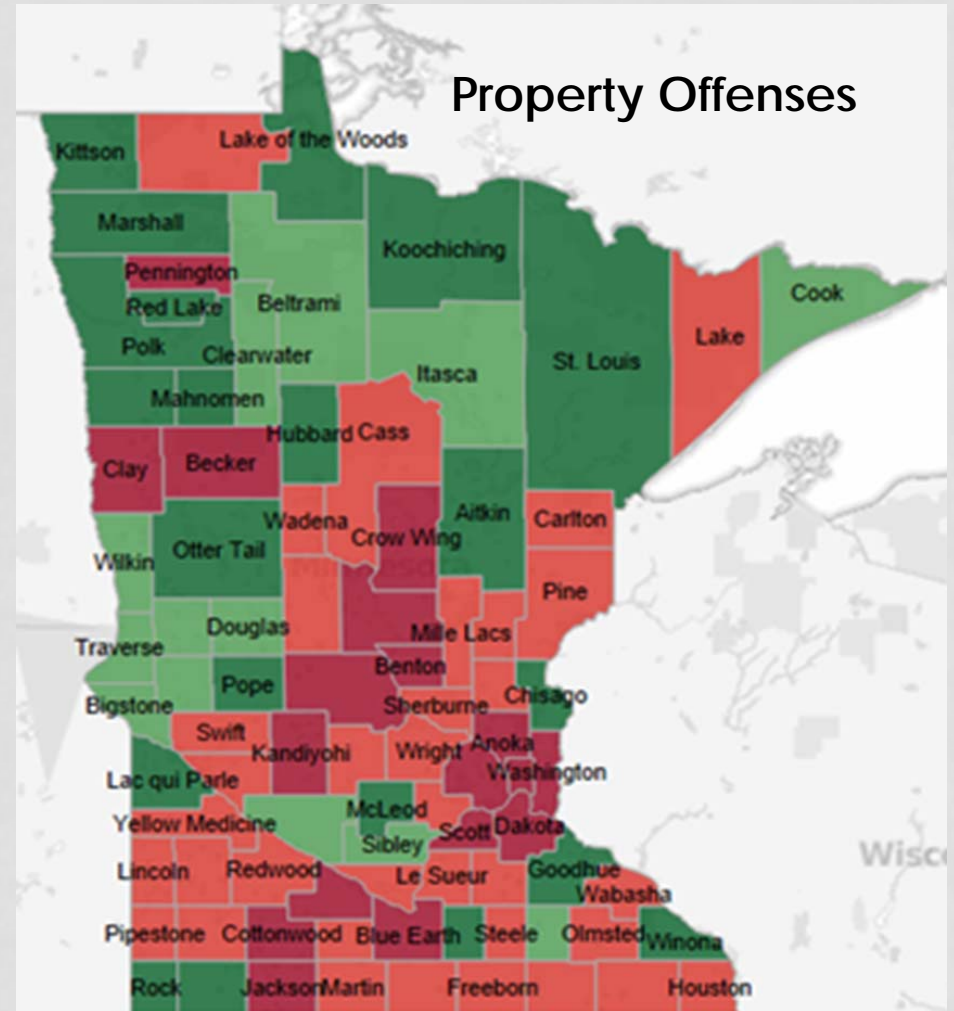
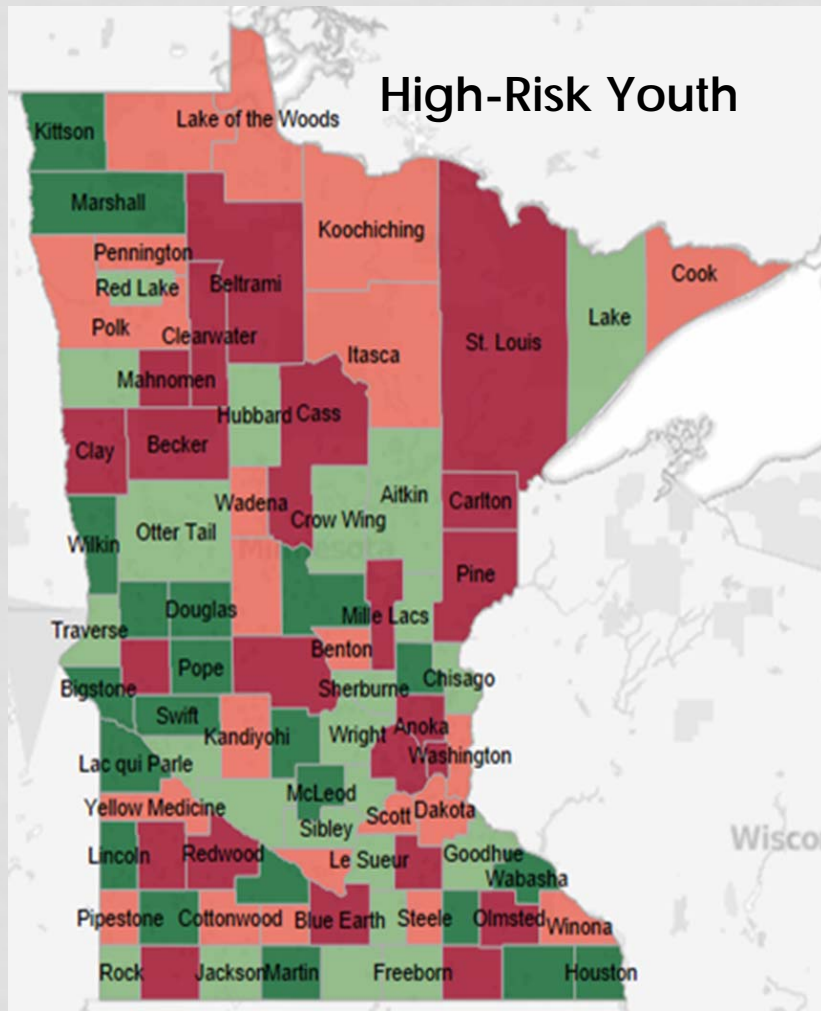
Property Offenses and High-Risk Youth

		High-Risk Youth				Total
		Low Risk	Some Risk	Moderate Risk	High Risk	
How many property offenses does your program target?	No Property Offenses	2	5	2	2	11
	% High-Risk Youth	11.1%	26.3%	10.5%	9.5%	14.3%
1 Property Offense		5	3	2	3	13
	% High-Risk Youth	27.8%	15.8%	10.5%	14.3%	16.9%
2 Property Offenses		9	9	8	9	35
	% High-Risk Youth	50.0%	47.4%	42.1%	42.9%	45.5%
3 Property Offenses		1	2	2	4	9
	% High-Risk Youth	5.6%	10.5%	10.5%	19.0%	11.7%
4 Property Offenses		1	0	5	3	9
	% High-Risk Youth	5.6%	0.0%	26.3%	14.3%	11.7%
Total		18	19	19	21	77
	% High-Risk Youth	100.0%	100.0%	100.0%	100.0%	100.0%

\*Correlation is significant at the 0.05 level<sup>a</sup>

a. \*\* Somers'd Value: .189

# HIGH-RISK YOUTH & PROPERTY OFFENSES



# HYPOTHESIS FOUR

HIGH-RISK YOUTH & VIOLENT OFFENSES

# HIGH-RISK YOUTH & VIOLENT OFFENSES

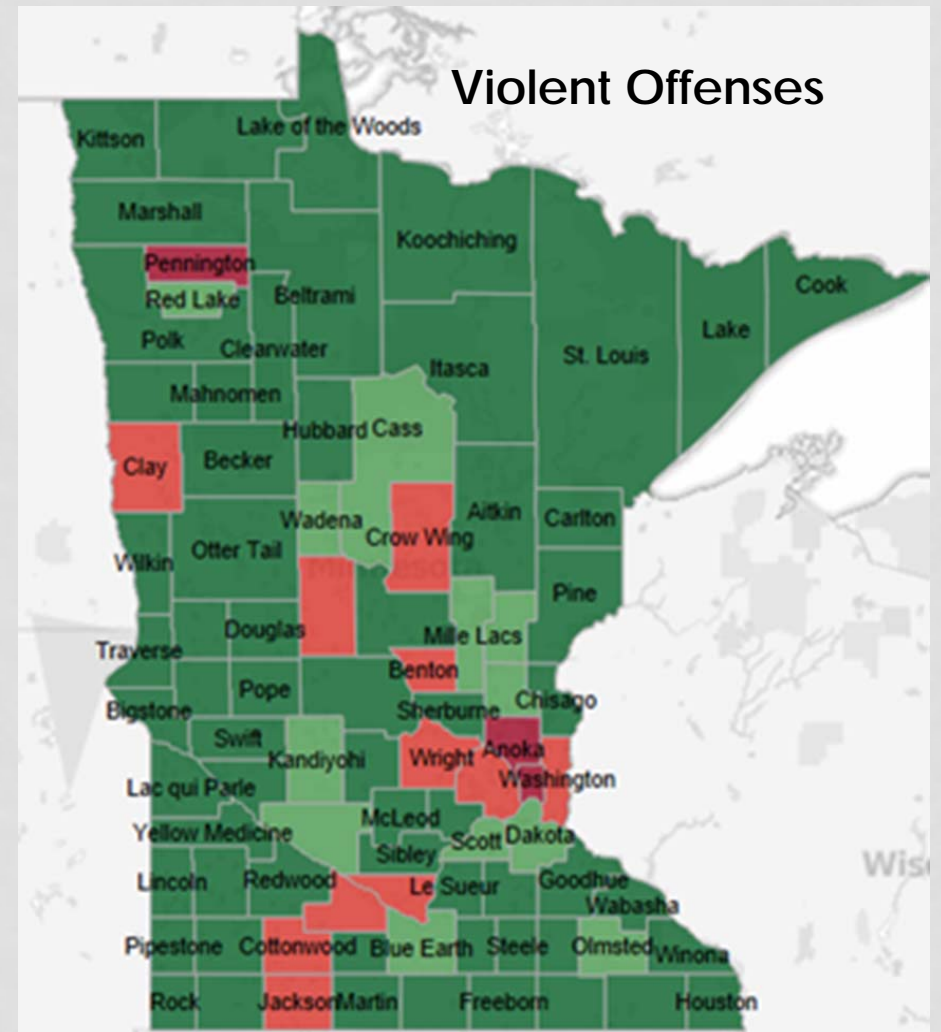
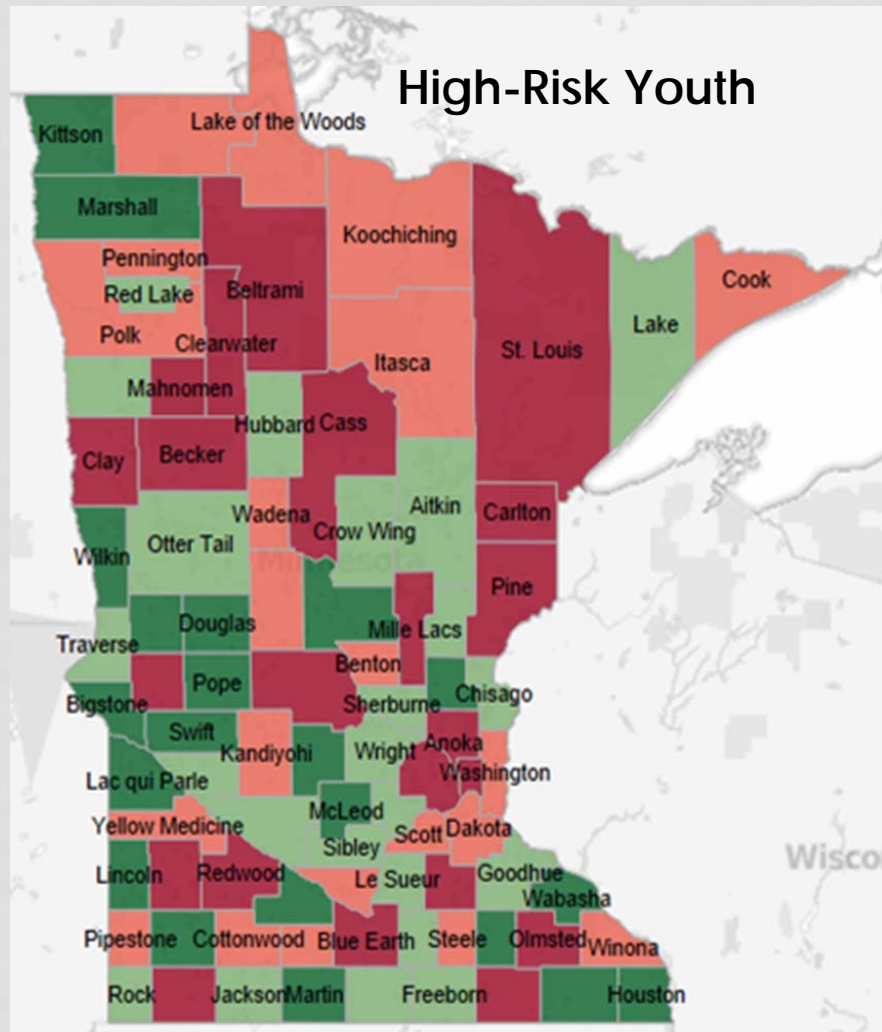
**Violent Offenses and High-Risk Youth<sup>a</sup>**

		High-Risk Youth				
		Low-Risk	Some Risk	Moderate Risk	High-Risk	Total
How many violent offenses does your program target?	No Violent Offenses	11	10	6	8	35
	% High-Risk Youth	61.1%	50.0%	31.6%	38.1%	44.9%
1 Violent Offense		5	4	3	5	17
	% High-Risk Youth	27.8%	20.0%	15.8%	23.8%	21.8%
2 Violent Offenses		1	3	4	4	12
	% High-Risk Youth	5.6%	15.0%	21.1%	19.0%	15.4%
3 Violent Offenses		1	3	5	2	11
	% High-Risk Youth	5.6%	15.0%	26.3%	9.5%	14.1%
4 Violent Offenses		0	0	0	2	2
	% High-Risk Youth	0.0%	0.0%	0.0%	9.5%	2.6%
5 Violent Offenses		0	0	1	0	1
	% High-Risk Youth	0.0%	0.0%	5.3%	0.0%	1.3%
Total		18	20	19	21	78
	% High-Risk Youth	100.0%	100.0%	100.0%	100.0%	100.0%

\*Correlation is significant at the 0.05 level

a. \*\*Somers'd Value: .196

# HIGH-RISK YOUTH & VIOLENT OFFENSES



# CONCLUSIONS

- Counties with a large number of high-risk youth are **not** more likely to target class offenses than counties with a smaller number of high-risk youth.
- Counties with a large number of high-risk youth are **not** more likely to target drug offenses than counties with a smaller number of high-risk youth.
- Counties with a larger number of high-risk youth are more likely to target property offenses than counties with a smaller number of high-risk youth.
- Counties with a large number of high-risk youth are more likely to target violent offenses than counties with a small number of high-risk youth.

QUESTIONS?



# WORKS CITED

- Abrams, L. S., Umbreit, M., & Gordon, A. (2003). Youthful Offenders Response to Victim Offender Conferencing in Washington County, Minnesota. *Center for Restorative Justice & Peacemaking*, 1-10.
- Andrews, D. A., & Bonta, J. (2010). *The Psychology of Criminal Conduct*. New Providence: Anderson.
- Fischer, D. G., & Jeune, R. (1987). Juvenile Diversion: A Process Analysis. *Canadian Psychology*, 60-70.
- Hoge, R. D., & Wilson, H. A. (2012). The Effect of Youth Diversion Programs on Recidivism: A Meta-Analytic Review. *Criminal Justice and Behavior*, 497-518.
- Kreager, C. M. (2011). Minnesota Diversion Guidebook. *Juvenile Justice Coalition*, 1-14.
- Lundman, R. J. (1976). Will Diversion Reduce Recidivism? *Crime & Delinquency*, 428-437.
- Minnesota Statute, 388.24 (Minnesota Legislature July 1, 1995).
- Schwalbe, C. S., Gearing, R. E., MacKenzie, M. J., Brewer, K. B., & Ibrahim, R. (2012). A Meta-Analysis of Experimental Studies of Diversion Programs for Juvenile Offenders. *Clinical Psychology Review*, 26-33.
- Swayze, D., & Buskovich, D. (2012). *Minnesota Juvenile Diversion: A Summary of Statewide Practices and Programming*. St. Paul: Minnesota Department of Public Safety.
- Swayze, D., & Buskovich, D. (2012). The Minnesota Youth Intervention Program. *Minnesota Department of Public Safety Office of Justice Programs*, 1-55.
- Thomas, W. I. (1928). The Child in America: Behavior Problems and Programs. In *The Methodology of Behavior Study* (pp. 553-576). New York: Alfred A. Knopf.