

Nursing
RN-BS
STUDENT
HANDBOOK
2024-2025



BEMIDJI
STATE UNIVERSITY

Welcome to the Bemidji State University Nursing RN-BS Program!

The curriculum in the nursing program is designed to teach, challenge, and excite you on your journey to becoming an independent learner and a successful professional nurse. To complete this rigorous program and to practice effectively as a professional nurse, you must demonstrate competency in many areas. A student nurse must perform all essential functions with or without accommodations. You have to take an active role in your education. This resource manual will help you as you progress through the nursing program.

This *Student Handbook* is intended to provide you, the nursing student, with the information you need to successfully manage your educational career at BSU. The information provided is specific to the Nursing program and is supplementary to the *BSU Undergraduate Catalog* (<http://www.bemidjistate.edu/academics/catalog>) and *BSU Student Handbook* (<http://www.bemidjistate.edu/offices/student-affairs/handbook/>), essential documents of Bemidji State University. **Each student is responsible for the contents in these references.**

The *Nursing Student Handbook* applies for each academic year. It is updated and posted on our website annually; current students are notified via email when the new version is available and provided with a summary of substantive changes effective immediately for all students. If significant changes in policies/procedures are made and implemented at a time other than the annual update, students will be notified of the changes via email and changes will be effective immediately. We hope this *Handbook* is helpful to you. We welcome any recommendations and/or comments.

In addition to this and other written resources, faculty advisors are an invaluable source of information and guidance. Every student is assigned an advisor who is prepared to assist you with program planning, degree completion and other questions pertaining to university life. We encourage you to meet with your advisor regularly to ask questions and seek additional information.

The Nursing faculty wish you much success on your educational journey!

A member of the colleges and universities of Minnesota State, Bemidji State University is an affirmative action, equal opportunity educator and employer. Bemidji State University is committed to a policy of nondiscrimination in employment and education opportunity. No person shall be discriminated against in the terms and conditions of employment, personnel practices, or access to and participation in programs, services, and activities with regard to race, sex, color, creed, religion, age, national origin, disability, marital status, status with regard to public assistance, sexual orientation, or membership or activity in a local commission as defined by law. Inquiries regarding compliance, rights and other information may be addressed to the Assistant to the President for Affirmative Action & Accreditation at 218-755-4121.

Upon request this document can be made available in alternate formats. Please contact the Accessibility Services Office at Bemidji State University at 218-755-3883 or email accessibility@bemidjistate.edu.

Table of Contents

I. Curriculum & Structure.....	5
Goals of the Nursing program	5
Vision & Mission	5
Philosophy	6
Curriculum Outcomes – Essentials of Baccalaureate Education.....	7
Shared Governance.....	8
Nursing Organizational Chart.....	10
II. RN-BS Track.....	11
Admission to RN to Baccalaureate Program.....	11
Practice Compliance Requirements	12
General Program Information	13
Clinicals/Practicums	14
Continuing and Discontinuing Enrollment.....	14
Unsuccessful Course or Course Withdrawal.....	14
Advising	15
Academic Evaluation of Nursing Courses	16
Changes in Contact Information	16
Computer Requirements.....	16
Critical Standards.....	17
Departmental Student Records.....	18
Exposure/Injury Protocol	19
Malpractice Policy/Procedure	19
Plagiarism/Academic Dishonesty	19
Prerequisites within the Nursing Program.....	20
Program Evaluation	20
Retention in the Major	20
Scholarships	21
Social Media Policy.....	21
Student Concerns and Grievances	22
Background Studies.....	24
Clinical Eligibility.....	26
Course Policies.....	26
III. Appendices.....	28
Appendix A: Baccalaureate Essentials Assignment Table: RN-BS Track.....	28
Appendix B: Documentation of Unprofessional Behavior and/or Unsafe Practice.....	32

Appendix C: Student Grievance Form 35
Student Receipt and Acknowledgement..... 36

Curriculum & Structure

Goals of the Nursing Program

In support of the institutional mission, the goals of the Bemidji State University baccalaureate nursing program are to:

1. Prepare nursing students to enter professional nursing practice.
2. Maintain academic excellence, which includes national accreditation and the recognition of standards/directions within the discipline, Minnesota Board of Nursing, and communities of interest.
3. Maintain a contemporary curriculum that promotes the development of a professional nurse who embodies a holistic view of people. Implement educational strategies and practices conducive to the personal and professional development of students.
4. Students will demonstrate responsible use of knowledge and critical inquiry to address professional nursing practice in a changing society and in a variety of settings.
5. Utilize an effective shared governance model that is congruent with the institution, the program and the needs of the learners.
6. Acquire and allocate resources to provide a positive learning environment.
7. Recruit and retain qualified and diverse students committed to academic excellence and professional development.
8. Recruit and retain diverse and qualified faculty who contribute to the university, the profession, and service and scholarly endeavors.

Est. 1/5/89

Revised: 5/90; 7/01; 2/07, 5/18, 9/22

Reviewed: 5/94; 4/17/97; 4/21/05; 4/30/09; 4/11, 4/13, 4/14, 3/16, 4/17, 4/19, 5/20, 5/21

Vision & Mission

Vision: We are a force for innovation, learning, and discovery in preparing proficient nurses for a dynamic healthcare world.

Mission:

- To engage in scholarship that supports the development of critical thinkers, creative problem solvers and innovative leaders in care delivery.
- To teach and support professionalism in nursing care for all individuals and populations.
- To educate and mentor the baccalaureate nurse generalist for a future that includes lifelong learning and a diverse global practice.

Est: 4/14/94

Reviewed: 10/94; 4/21/05; 4/13; 4/14, 3/16, 5/18, 5/20

Revised: 4/17/97; 7/01; 12/01, 2/14/02, 2/15/07, 5/13/09, 4/17, 5/21, 9/22

Philosophy

Humankind – Health

Human beings are viewed holistically. Each individual and each group is a complex integration of biological, psychological, social, cultural, and spiritual dimensions.

Human beings are unique, autonomous, and possess inherent dignity, worth, and rights. We exist dependently, independently, and interdependently. Rights infer responsibilities within each individual's capacity.

Growth and change may be multifaceted, influenced by individual differences in personal potential and by subjective meanings and values.

Health involves a complex, multidimensional phenomenon influenced by biological, psychological, social, cultural, and spiritual variables.

Health is individually defined and subjectively perceived. Internal and external forces and resources influence health.

Human beings experience varying states of health during their lives.

Nursing

The provision of nursing care, as part of the health care system, is influenced by legal, political, economic, social, and global forces. Humane, quality health care is a right and should be equally accessible to all people.

People have the right to make informed decisions in regard to their health and health care. Nursing addresses human responses to life experiences and varying states of health and illness.

Nursing is involved with the promotion, attainment, and preservation of optimal health and the amelioration of suffering.

Nursing supports human beings in growth and change to maximize health potentials across the lifespan and/or to support a peaceful death.

Nurses assess, design, provide, manage, and coordinate care for individuals, families and communities/populations representing diverse cultures, values, and beliefs.

Nursing is guided by a respect for human dignity and requires a commitment to caring. Nurses respect and encourage client autonomy.

Nursing practice is conducted in a variety of contexts. Critical reflective thought, liberal education, professional knowledge, practice abilities, life experiences, and the values of the individual provide the foundation for nursing practice.

Ethical professional behavior and decision-making abilities are essential in one's practice and relationships.

Membership in the discipline of nursing involves a commitment to excellence; advocacy for nursing and humane, quality health care; accountability for one's individual practice; responsible inquiry; and continued professional growth.

Professional nursing practice is influenced by and contributes to society. Inherent to addressing the health needs of people and the evolution of nursing as a discipline are collaboration with other groups, use of knowledge in refining practice, and the critical examination of nursing practice.

Learning

Baccalaureate nursing education fosters self-directed learning to enable nurses to understand the meaning of their experiences and to realize values in their practice.

Baccalaureate education prepares graduates to serve as generalists in nursing practice and serves as a basis for graduate study.

The learning environment encourages participants to critically examine assumptions, to explore alternative views, and to support the development of expanded or new perspectives.

Learning is a complex process. Though some forms of learning may be predictable and observable, not all significant learning can be equated to measurable changes in behavior. Learning includes the individual meaning that emerges for the learner.

Faculty serve as resources and facilitators in the learning process. The learning environment provides for mutual respect, engages the learner in learning, and assists the learner in examining perspectives upon which practice is conducted.

Experiential learning provides an arena whereby knowledge, practice, and individual meanings may be critically examined. Critical thought and reflection enhance the development of autonomy and empowerment for personal and professional growth.

Revised: 4/26/90; 5/94; 2/95; 7/01; 11/01, 2/14/02, 10/16/03, 4/17/17

Reviewed: 10/94, 4/95, 2/19/04, 2/17/05, 3/08/07; 4/11; 4/13; 4/14, 3/16, 5/18, 5/20, 5/21, 9/22

Edited: 8/97

Curriculum Outcomes – Essentials of Baccalaureate Education

Elements addressed in the BSU Nursing Program include:

1. **Liberal Education for Baccalaureate Generalist Nursing Practice**

- A solid base in liberal education provides the cornerstone for the practice and education of nurses.

2. **Basic Organizational and Systems Leadership for Quality Care and Patient Safety**

- Knowledge and skills in leadership, quality improvement, and patient safety are necessary to provide high quality health care.

3. **Scholarship for Evidence-Based Practice**

- Professional nursing practice is grounded in the translation of current evidence into one's practice.

4. **Information Management and Application of Patient Care Technology**
 - Knowledge and skills in information management and patient care technology are critical in the delivery of quality patient care.
5. **Health Care Policy, Finance, and Regulatory Environments**
 - Healthcare policies, including financial and regulatory, directly and indirectly influence the nature and functioning of the healthcare system and thereby are important considerations in professional nursing practice.
6. **Interprofessional Communication and Collaboration for Improving Patient Health Outcomes**
 - Communication and collaboration among healthcare professionals are critical to delivering high quality and safe patient care.
7. **Clinical Prevention and Population Health**
 - Health promotion and disease prevention at the individual and population level are necessary to improve population health and are important components of baccalaureate generalist nursing practice.
8. **Professionalism and Professional Values**
 - Professionalism and the inherent values of altruism, autonomy, human dignity, integrity, and social justice are fundamental to the discipline of nursing.
9. **Baccalaureate Generalist Nursing Practice**
 - The baccalaureate-graduate nurse is prepared to practice with patients, including individuals, families, groups, communities, and populations across the lifespan and across the continuum of healthcare environments.
 - The baccalaureate graduate understands and respects the variations of care, the increased complexity, and the increased use of healthcare resources inherent in caring for patients.

Established: 1983

Revised: 5/94, 2/95, 3/8/07; 9/18/09; 7/5/11

Reviewed: 1/26/90; 5/29/90; 10/94; 7/01; 11/1/01; 12/6/01, 2/14/02, 2/28/02, 4/25/02, 2/17/05; 7/5/11; 4/13; 4/14, 3/16, 4/17, 5/18 Advisory Board, 4/19, 5/20, 5/21

Shared Governance

The Nursing program uses a shared governance committee structure for decision making, program evaluation and establishment of mission and policies.

Students are an important part of shared governance. Their input and feedback provide the department with valuable information that contributes to a better program.

Nursing committees meet approximately once per month. All regular department faculty meetings are open, except those at which personnel or students are discussed. Students are welcome to attend, present at, or participate in discussions at all regular department faculty meetings and standing committee meetings.

Students anticipating enrollment or currently enrolled in the nursing major may communicate concerns and requests in writing to the appropriate committee chairperson or to the Chief Nursing Administrator (CNA). Special requests or presentations shall be communicated in writing to the committee chairperson for placement on the agenda. The schedule of regular meetings will be posted in advance of each semester.

Department Standing Committees

The Nursing standing committees are: Curriculum Committee; Student Admission, Progression, and Concerns Committee; Faculty and Budget Committee; Nursing Leadership Committee; and the Student Input Forum.

The *Curriculum Committee* functions, in conjunction with faculty and within the parameters of institutional policies, to determine elements related to the curricula including course content, evaluation, and prerequisites.

The *Student Admission, Progression, and Concerns Committee* determines policies regarding admission, progression, graduation, student advisement, and retention, and makes decisions about individual student grievances.

The *Faculty and Budget Committee* determines policies regarding departmental function, faculty and staff needs, and general program operations.

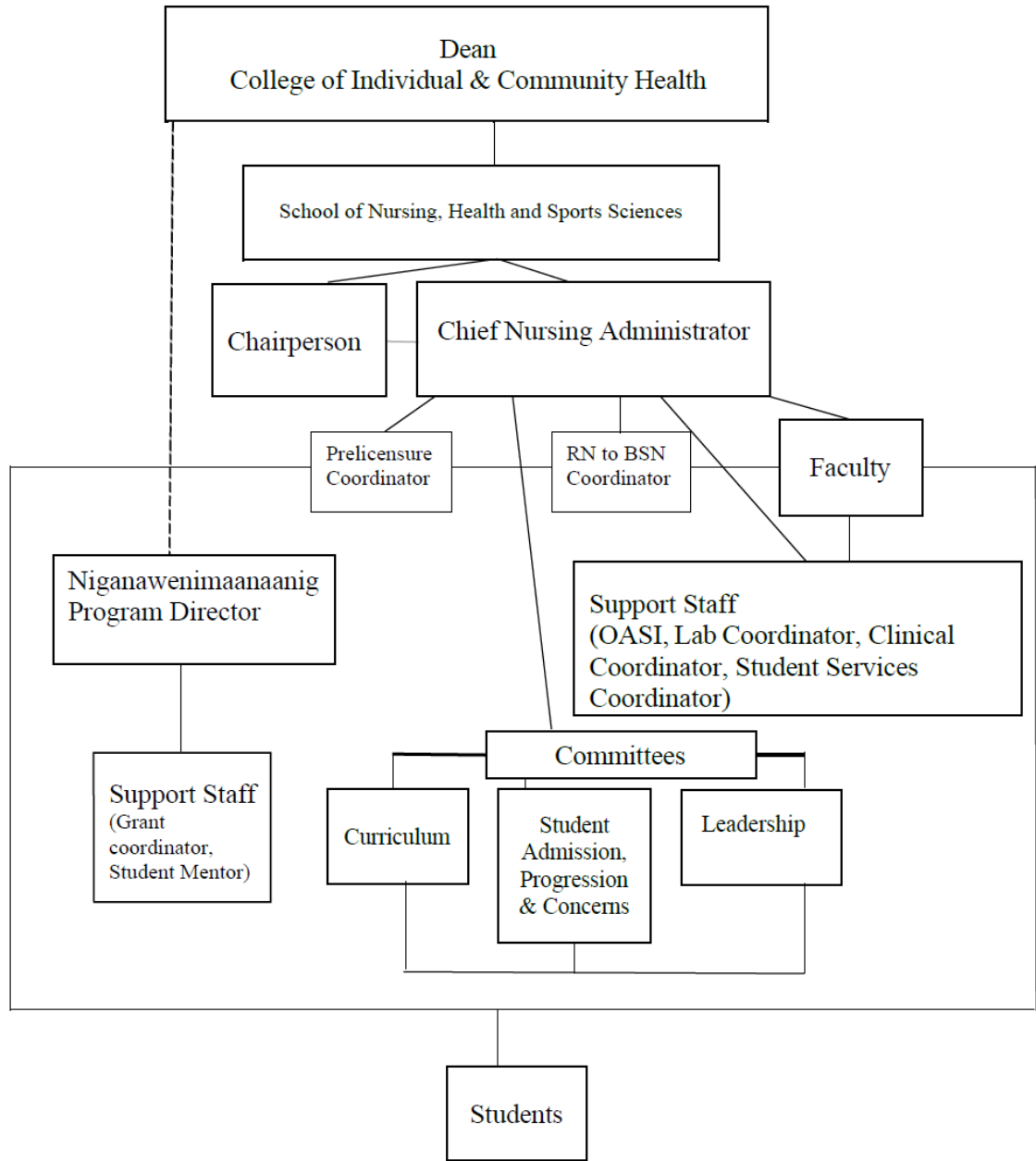
The *Nursing Leadership Committee* is made up of all the standing committee chairs, program coordinators, and the CNA.

Student Input Forums function to provide a communication and evaluation link between students and faculty. Student Input Forums will be scheduled annually. They will be open forums to allow students to provide input into all areas of the nursing programs. The CNA will schedule and facilitate the forums. These forums serve in an advisory capacity. Matters relating to the students will be brought before the students for their input and recommendations.

Established: 12/87

Revised: 5/19/88, 6/15/90, 2/23/95, 3/30/95, 5/95, 11/8/01, 8/20/02, 2/9/06, 8/07, 2/12/10, 5/2013, 5/16, 5/17, 1/18, 5/20, 5/21

Nursing Organizational Chart



Est. 4/5/90

Revised: 8/21/92; 3/23/95, 5/23/01, 4/02, 8/02, 8/07, 5/13, 5/15, 6/17, 1/18, 5/18, 7/19, 5/20, 5/21

Admission to BSU

Students must be admitted to Bemidji State University **prior** to applying for admission to the nursing major. Any liberal education goal areas may be, but are not required to be, completed prior to admission to the nursing program. Admission to BSU can be completed here:

<https://www.bemidjistate.edu/admissions/>

Application to Nursing Major

Admission to the nursing major is a separate process from admission to Bemidji State University and is on a first-come, first-served basis. Details about the admission requirements and a link to the online application can be found on the Nursing website: [Admissions](#)

Admission to the Major:

- Be fully admitted to Bemidji State University.
- Achieved a minimum cumulative GPA of 2.50 in previous RN program
- Submit a RN-BS Program application.
- Applicants to the program must have earned an associate degree or diploma degree as a registered nurse or be licensed RNs by the end of the first semester in the BSU RN-BS program (must have RN License prior to starting NRS 4116/NRS 4120). If a license is not acquired within the first 16 weeks of the program, the student will no longer be eligible to progress in RN-BS nursing courses.
- Be licensed to practice as a registered nurse or be a graduate with state license pending in Minnesota, Wisconsin, or North Dakota. Full admission to the program requires unencumbered licensure. See below, unencumbered RN license information.
- Have internet access suitable for delivery of online courses, practice experiences, and peer collaboration.
- Students must reside in Minnesota, North Dakota, or Wisconsin and student must have an unencumbered RN license from the state in which they reside (must have RN License prior to starting NRS 4116/NRS 4120). If a student has an encumbered RN license, they are not eligible for admittance to the program. If a student changes states of residency while in the program, may not be able to continue in the program unless they move to North Dakota, Wisconsin, or Minnesota. If a student changes states of residency, they must notify the Nursing program.

Applicants must submit to and satisfactorily complete the approved Nursing background check as a condition of admission. An offer of admission is contingent upon the successful completion of the background check(s) with results deemed favorable. Admission may be denied or rescinded based on the outcome of the background check.

Students wishing to apply to the program a second time must complete a new application. Students will only be allowed to apply to the nursing major twice.

International Students: (non-US citizens)

All international students' transcripts must be reviewed prior to being admitted to the program. CGFNS International, Inc., will be used to evaluate transcripts.

Revised 6/17, 5/20, 5/21, 5/22, 2/23

Transfer Credits

Applicants will receive transfer evaluations from the Admission's Office once they have been admitted to BSU. The completion of a bachelor's degree at BSU requires the completion of the BSU liberal education requirements or the [MN transfer curriculum](#). RN Advantage credits (15 total upper division) will be awarded to the academic record once they have an unencumbered/unrestricted RN license.

Admission Review

The Nursing program works with Extended Learning to determine the admission status of applicants to the RN-BS nursing major.

Admission Status

1. Applicants who meet all admission requirements will be admitted with regular status.
2. Once the program has reached full enrollment, applicants may be placed on a waitlist.
3. Once accepted, if applicants do not take courses within one year, they must reapply to the program.

Admission Notification

1. The Center for Extended learning will notify applicants of their admission to BSU.
2. The Nursing program will notify applicants of their admission status to the baccalaureate nursing major.
3. Individuals admitted to the nursing major will be enrolled in the mandatory D2L Brightspace Nursing Program Orientation course.
4. **Admitted students are required to register for fall/spring classes two weeks before the semester starts.** Seats in the nursing classes will not be held for admitted students after that date.

Revised: 3/91; 12/92; 11/94; 7/95; 4/97; 1/98; 2/99; 11/99; 5/01, 3/02, 2/06, 4/13, 5/14, 5/16, 6/17, 11/19, 5/20, 11/20, 5/23
Reviewed: 5/21, 5/22,

Practice Compliance Requirements

To comply with state, federal, and agency requirements, students must submit required documentation by deadline set by department. All documentation must remain up to date while enrolled in the program.

The RN-BS program uses an online clinical eligibility tracking system, Clinician Nexus, to store background studies and practice compliance requirements. Students will be sent an email with login information to set up their Clinician Nexus account. To enroll and remain in the RN-BS program, it is the student's responsibility to keep their practice compliance requirements current. If students are not compliant and current (up to date) with all of these items, they will face ineligibility of admission, delay of course progression or program dismissal. Newly admitted students without the required documentation on file by the deadline set by the department will be dropped from their courses, and are not permitted to progress in the program.

Failure to maintain clinical eligibility documentation throughout the program will result in inability to progress in the program.

The National and State (in the state the student resides) background study must show the ability to provide direct patient care. A student that is not authorized to provide unsupervised

care, based on background study results, will be unable to progress in the program.

Practice Compliance Requirements:

- National and State (in the state the student resides) background studies that show the ability to provide direct patient care.
- Any, and all, paperwork required by the faculty or clinical facilities

Students will cover the cost of the practice compliance requirements and will upload the documents into the clinical eligibility tracking system (Clinician Nexus).

Clinical sites may have additional eligibility requirements specific to their facilities, which students must meet in addition to those listed above. Students must also complete a release of information form, giving the Nursing program permission to share the results of the practice compliance requirements if requested by clinical agencies.

Revised: 6/17, 11/20, 5/22, 5/23

Reviewed: 5/18, 5/19, 5/20, 11/20, 5/21

General Program Information

Registration for Courses

Online registration is accomplished using e-Services, available through [MyBSU](#). After the initial semester, registration may require an access code, which students must obtain from their advisors.

Course Scheduling in the Department

Courses are conducted in a blended and/or online format. On-campus days are listed in the notes of each course, which can be found on the BSU website <http://www.bemidjistate.edu/academics/schedule/>.

Library and Computer Resources

The Bemidji State University library is open during the day, evenings and weekends. Distance students are entitled to full use of library resources. Students have off-campus access to library resources via the library home page: <http://www.bemidjistate.edu/library/>. All BSU students also have access to free Microsoft Office through Office 365, which can be found linked at the top of the BSU email homepage.

Departmental Advising

Once students are admitted to the program, they are assigned a nursing faculty advisor who can help plan an individual's academic program. The student service coordinator will be available to assist with advising during the summer months.

Communication

It is the policy of BSU that administrative electronic mail communications between the University and University students shall be done using University-assigned electronic mail addresses. It shall be the responsibility of each student to monitor the University-assigned electronic mail account for communications from the University. Students can expect a response from faculty within 48 hours during the workweek but should not expect faculty responses during weekends.

Clinicals

1. It is important to note that enrollment in clinical courses will require additional time outside of the regularly scheduled class time.
2. Students in the RN-BS Track Program must maintain an unencumbered RN license.
3. All students must be in compliance with all practice compliance requirements. Clinical assignments will be contingent upon verification of these requirements, and lack of such verification will prevent the student from beginning, remaining involved, and/or completing a course.
4. Clothing worn by students for practicum experience is to be in accordance with the respective agency policies.
5. Students are responsible for their own transportation and auto insurance affiliated with clinical experiences.
6. Clinical experiences associated with the program will not be conducted during a student's scheduled time of employment.
7. Formal contracts are required between the Nursing program and agencies if students have a clinical assignment at that location.
8. Faculty reserve the right to make final decisions regarding clinical placement in clinical courses.
9. Students identify when assistance or further preparation is needed prior to engaging in clinical experiences, refrain from participating in nursing clinical activities for which one is not adequately prepared and seek consultation from faculty and/or agency personnel.

Revised: 5/16, 5/20, 11/20, 11/23
Reviewed 5/22, 5/23

Continuing and Discontinuing Enrollment

RN-BS students may enroll in the nursing major on a part-time or full-time basis; part-time students are encouraged to work with their advisors on a course progression plan within student planner.

Students may transition to part-time status at any time.

Students not continuing enrollment in nursing courses, other than by dismissal, are requested to communicate with their advisors about their decision and to discuss plans for returning to the program.

Students enrolled in the RN-BS major must complete all nursing course requirements within a six year period after initial enrollment in nursing courses.

Revised 5/16, 6/17, 1/18, 5/19, 5/20, 5/21, 5/22

Unsuccessful Course or Course Withdrawal

An RN-BS student who receives a "D" or "F" in a nursing course may repeat the course only once. Only one course can be repeated. A second experience of receiving an unsuccessful

grade (D or F) in the same or different nursing course will result in dismissal from the nursing program.

If an RN-BS student needs to withdraw from one or more courses, they should contact their faculty advisor prior to withdrawing and a degree completion plan should be developed. If a student withdraws from all registered nursing courses during the first program semester, they must reapply to start again the following semester. Concepts of Professional Nursing (NRS 3100) must be successfully completed as a pre- or corequisite in order to progress in the program.

Revised: 1/18, 5/23

Reviewed: 5/20, 5/21, 5/22

Advising

1. Students are assigned faculty advisors after admission to the major. Advisee-advisor assignments are posted on the student's BSU portal and listed at the top of the Interactive Degree Audit Report (DARS). The student service coordinator will be available to assist with advising during the summer months.
2. Advisees may request an advisor change at any time by completing the written request form provided by advising@bemidjistate.edu.
3. The faculty advising role focuses on assisting the student with academic advising. Students are encouraged to meet with advisors for academic planning and registration. It is the student's responsibility to initiate meetings with the advisor. It is the advisor's responsibility to lend support and guidance as requested. It is ultimately the student's responsibility to know and meet the program requirements.
4. Other university support services are available through referral and provide information concerning resources to students.
5. Students are required to meet the BSU Liberal Education requirements (see the *BSU Undergraduate Catalog*) in order to graduate, or they may transfer in an AA degree or complete the Minnesota Transfer Curriculum through another educational institution. The liberal education requirements are very specific. Therefore, students should be sure to only select classes that are listed as options for the applicable goal areas.
6. The course and credit requirements for the nursing major are described in the *BSU Undergraduate Catalog*. It is the student's responsibility to read the *Catalog* and be familiar with all the requirements.
7. Graduation requirements may be found at the BSU [Records and Registration website](#).

Reviewed 5/20, 5/21, 5/22, 4/23

Academic Evaluation of Nursing Courses

Grading Standard within Courses

1. After being admitted into the nursing program, all nursing courses must be passed with a minimum of 75% or “C”.
2. The Nursing program grading standard is as follows:

93-100	=	A
84-92	=	B
75-83	=	C
68-74	=	D
<68	=	F

Note: The Nursing program does not use plus and minus grades. The nursing program does not accept Pass/No Credit or Pass/Fail grades for any pre-requisite, required, or Nursing courses.

3. The grading standard will be included in every syllabus within the evaluation section.
4. The professor reserves the right to lower grades when assignments are submitted late. Unusual circumstances will be taken into consideration.
5. Students who pass an assignment will not be allowed to repeat the assignment for a better grade.
6. Students who earn less than a “C” on an assignment *may* be allowed to redo the assignment if the faculty member permits. Students who are allowed to repeat assignments will receive a grade no higher than a “C” on that assignment.
7. Exams, homework, quizzes, graded assignments and final grades will be the percentage achieved. **Rounding & Curving of exam scores is not done.**
8. Students wanting to contest a grade should follow the Academic Grade Challenge Policy found in the *BSU Student Handbook*. The Appeal of Final Course Grade process can be found at: <https://www.bemidjistate.edu/mybsu/student-complaints/>

Incompletes

9. An incomplete will be given only when the student has made a request to the professor prior to the end of the semester. Prerequisite courses must be completed prior to beginning courses the next semester.

Revised 5/14, 5/15, 5/16, 6/17, 1/18, 5/18, 5/19, 11/19, 5/20, 5/21, 5/22, 5/23

Changes in Contact Information

Students must submit any changes in name, address, phone number and email address to the Nursing program and the Records Office.

Computer Requirements

1. All RN-BS students must have access to a computer, with a working camera and speakers, and high-speed internet.
2. Further university IT recommendations and resources are listed here: <http://www.bemidjistate.edu/offices/its/hardware-software/techrecommendations/>.

Critical Standards

The following are considered to be critical standards, in addition to satisfactory academic achievement, within the program:

1. The Nursing program and affiliated agency policies, procedures, and communication protocols are followed.
2. Critical incidents are recognized and reported to appropriate agency personnel and departmental faculty.
3. The confidentiality of client records and situations is appropriately maintained.
4. Students are expected to practice the highest standards of ethics, honesty and integrity in all of their academic work. The most current *Publication Manual of the American Psychological Association (APA)* serves as the format for all papers assigned in the Nursing program. Any form of academic dishonesty (e.g., plagiarism, cheating, misrepresentation) may result in disciplinary action. Possible disciplinary actions may include failure for part or all of a course, as well as suspension from the University.
5. The student's physical and emotional health, conduct, values, and attitudes must not threaten the safety or welfare of self, clients, students, or others within the department and affiliated agencies.
6. Nursing practice is conducted safely within the scope of practice as established by the Minnesota Board of Nursing.
7. All students will follow the *Code of Ethics for Nurses*:
 - a. The nurse practices with compassion and respect for the inherent dignity, worth, and unique attributes of every person.
 - b. The nurse's primary commitment is to the patient, whether an individual, family, group, community, or population.
 - c. The nurse promotes, advocates for, and protects the rights, health, and safety of the patient.
 - d. The nurse has authority, accountability, and responsibility for nursing practice; makes decisions; and takes action consistent with the obligation to promote health and to provide optimal care.
 - e. The nurse owes the same duties to self as to others, including the responsibility to promote health and safety, preserve wholeness of character and integrity, maintain competence, and continue personal and professional growth.
 - f. The nurse, through individual and collective effort, establishes, maintains and improves the ethical environment of the work setting and conditions of employment that are conducive to safe, quality health care.
 - g. The nurse, in all roles and settings, advances the profession through research and scholarly inquiry, professional standards development, and the generation of both nursing and health policy.
 - h. The nurse collaborates with other health professionals and the public to protect human rights, promote health diplomacy, and reduce health disparities.
 - i. The profession of nursing, collectively through its professional organizations, must articulate nursing values, maintain the integrity of the profession, and integrate principles of social justice into nursing and health policy.

8. It is the responsibility of the student to choose behavior conducive to learning by being prepared, prompt, attentive, and courteous in the classroom and by conforming to policies set by the faculty to maintain an academic decorum. [The Bemidji State University Student Code of Conduct](#) will be closely adhered to by the department. All students and faculty are expected to treat everyone with respect and can expect to be treated courteously by others.

Any written report or academic written warnings get filled out by the faculty and student. The written report/warning may constitute a simple filed warning, immediate withdrawal from a course and/or a failure in the course, and /or dismissal from the major. Then sent to be reviewed and tracked by the Student Admission, Progression and Concerns committee.

Revised 5/14, 5/16, 1/18, 5/21

Reviewed 6/17, 5/19, 5/20, 5/21, 5/22,

5/23

Departmental Student Records

An advisory folder for each student is initiated upon acceptance into the nursing program. The Nursing program maintains files for all current students.

While the student is actively enrolled in the nursing major, the following are examples of information that could be maintained digitally, either in the student file or in the clinical eligibility tracking software:

1. Letters regarding admission status
2. Background study notification letters, uploaded by students.
3. Evidence of current immunization records, uploaded by students.
4. Miscellaneous correspondence related to academic status, grievances, awards, or recommendations
5. Disciplinary forms

After graduation, the student folder will be maintained for a minimum of two years before being destroyed. A cumulative record of graduate contact information will be maintained by the department to facilitate contact with alumni. Aggregate data will also be maintained for the purpose of program evaluation and other such activities. Permanent transcripts are maintained in the Records Office.

Student Advisory Folder Procedures

1. Digital student folders will exist on the BSU server (J: drive) in a location directly accessible only to SAP-C committee members and the Department Chair, or maintained in the clinical eligibility tracking software. Hard copies of student information will be maintained in a supervised area in a file cabinet accessed only by faculty and staff until it can be scanned in and filed in the Digital Student Folder.
2. Digital Student folders are to be accessed/used only within a supervised department area.
3. If a student wishes to review his/her digital departmental folder, a meeting will need to be set up with a SAP-C committee member and the Department Chair. The student will be allowed to review the secured information in the presence of one of the above mentioned department representatives.
4. Items listed above may be placed in the digital student folder by the SAP-C committee members or the Department Chair. Students may submit records of

honors, awards, published articles, and other such items to their faculty advisor for inclusion in the digital student file.

5. A student may review his/her digital student folder and appeal to the Student Admission, Progression, and Concerns Committee for removal of items considered to be inaccurate, misleading, or otherwise in violation of privacy or other rights. If the appeal fails, the student has the right to add a written rebuttal to the record and/or proceed through the grievance procedure as described in the *BSU Student Handbook*.
6. Student coursework is maintained for two years, after which time it will be destroyed. Such material may be available upon request to faculty.

Revised 2/06, 5/14, 5/16, 6/17, 5/18, 5/20, 5/21

Reviewed 5/22, 5/23

Exposure/Injury Protocol

Students who are injured while participating in classes or other activities on campus should follow the procedures suggested by [Student Health and Counseling](#) and the office of [Environmental Health and Safety](#).

Universal blood and body substance precautions and blood-borne pathogens information will be posted in the nursing lab and provided to students through course materials.

Students participating in off-campus clinical learning experiences will follow individual agency protocols.

Established: 6/17

Reviewed: 5/20, 5/21, 5/22,

5/23

Malpractice Policy/Procedure

Student malpractice insurance coverage for practice in clinical areas will be automatically provided by the University and paid for with differential tuition. This insurance is to cover situations pertaining to injury of others.

Revised 5/15

Reviewed 5/20, 5/21,

5/23

Plagiarism/Academic Dishonesty

Students are expected to practice the highest standards of ethics, honesty and integrity in all of their academic work. The most current *Publication Manual of the American Psychological Association (APA)* serves as the format for all papers assigned in the Nursing program.

Any form of academic dishonesty may result in disciplinary action including: a Documentation of Unprofessional Behavior/Practice form filed and reviewed by the Student Admission, Progressions and Concerns committee and BSU Conduct Officer; failure of the assignment or project; failure of the course; and/or expulsion from the University.

The following definitions and examples are provided to help students determine what will be considered academic dishonesty/plagiarism and how to avoid it:

- **Plagiarism:** submitting coursework as one's own that includes words, thoughts and ideas from another author without proper citation (author, date, page number). Direct quotes must include quotation marks in addition to proper citation.
- **Paraphrasing:** rewording an author's words, thoughts and ideas to demonstrate individual perspective and understanding. The author is acknowledged for his/her

original words, thoughts, and ideas through proper citation.

Other instances of academic dishonesty include, but are not limited to, giving or receiving unauthorized assistance on an examination; unauthorized collaboration on individual assignments; providing false information (e.g., family emergency, death or illness) to obtain an extension or exemption from an assignment; or any act designed to provide a student with an unfair advantage or the attempt to commit such acts.

Examples:

1. Working with one or more other students on an individual assignment and submitting the work as your own.
2. Submitting the work of others as your own.
3. Submitting the work of others as your own with minimal changes.
4. Submitting others' work, in part or whole, without quotation marks, adequate paraphrasing, or proper citation.
5. Submitting the same work, in part or whole, for more than one course without both instructors' approval, or with only minimal revisions to the original work that has already received credit and submitting again as new work.
6. Taking an examination for another person.
7. Sharing testing materials.
8. Sharing simulation scenarios.
9. Sharing clinical work.

Established: 5/16

Reviewed 5/18, 5/20, 5/21, 5/22

Revised: 6/17, 5/19

Prerequisites within the Nursing Program

Several courses in the nursing curriculum are sequentially arranged. Progression to selected courses is based on successful completion (grade of "C" or better) of listed prerequisite courses.

A student who fails or withdraws from a course that is a prerequisite for a course in the following semester must stop out of the program until the needed course is available.

Students seeking an alteration in the progression of courses and/or requirements in the nursing program should follow the grievance process described elsewhere in this document.

Revised 6/17, 11/19

Reviewed 5/20, 5/21

Program Evaluation

Students are requested to participate in individual course and program evaluations at various intervals. Evaluation surveys and procedures are provided by the department. Periodically, permission will be sought from individuals to make copies of course assignments for program evaluation.

Reviewed 5/20, 5/21

Retention in the Major

The Nursing program reserves the right of retaining in the major only those students who, in the judgment of the departmental faculty, satisfy the requirements of scholarship, behavior, and health characteristics suitable for the profession.

When a student demonstrates professional and/or personal attributes that do not meet the standards of safe clinical practice and professionalism in clinical, classroom, lab or community settings, the Nursing faculty will schedule a meeting with the student to initiate the *Documentation of Unprofessional Behavior and/or Unsafe Practice*

(Appendix C). This process may result in a written warning, plan for remediation, failure of course or exit from the Nursing program.

Established: 5/15/85

Revised: 10/29/87, 3/29/88, 4/20/88, 4/21/88, 5/27/88, 9/88, 2/2/89, 5/4/89, 4/5/90, 5/3/90, 4/20/92, 5/93, 3/94, 9/95, 4/97, 8/99, 5/23/01, 2/02, 8/02, 10/6/05, 2/06, 8/07, 4/09, 4/13, 5/14, 5/17, 1/18, 5/19

Reviewed: 5/20, 5/21, 5/22, 5/23

Scholarships

Several scholarships are available for students who have been accepted into the nursing program. Applications are due in February each year for the following school year. Details about each scholarship and the application process can be found on the Department of Nursing website: <http://www.bemidjistate.edu/academics/departments/nursing/scholarships/>.

Reviewed 5/20, 5/21, 5/22

Social Media Policy

I. Policy

It is the policy of Nursing program and affiliates to manage social media as an extension of marketing and communications on behalf of BSU entities. BSU respects the right of students/staff to participate in social media; however, the business needs of the BSU entities must be served while also maintaining their corporate identity, integrity, and reputation in a manner consistent with BSU's mission, core values, policies, and applicable laws. BSU entities will investigate alleged violations of the policy and impose corrective action on the student/staff who fail to comply with state or federal laws or with organizational policies, standards, guidelines or procedures related to the use of social media.

II. Scope

This policy applies to BSU nursing students and staff when using social media while at work, home, campus, or anywhere when the student/staff's affiliation with BSU, clinical or capstone site is identified, known or presumed.

III. Purpose

The purpose of this social media policy is to assist students/staff in understanding how social media applies to their BSU affiliation and their responsibilities when communicating through these methods.

IV. Definitions

1. **Social Media:** is primarily internet- and/or mobile-based methods of networking using web/mobile-based tools to communicate widely, quickly and easily for the purpose of sharing information and communicating with others. Such as, but not limited to:
 - a. Facebook
 - b. Twitter
 - c. Texting
 - d. Tik Tok
 - e. Instagram

f. Snapchat

2. **Protected Health Information (PHI):** is any identifiable health information, including demographic information that contains:
- Past, present or future physical/mental health or condition of an individual
 - Past, present or future payment for and individual's healthcare
 - Identifies the individual, OR there is reasonable basis to believe the information can be used to identify the individual

3. **When Using Social Media**

- Students/staff using social media shall not:
 - Disclose BSU entities', patients', or affiliates' confidential information or PHI
 - Disclose location, facility type, or any demographic identifier of clinical or capstone.
- When using social media the student/staff will not express or represent their views as those of BSU unless they have been authorized to do so.
- Students/staff photographing any individuals (patients, family, staff as example but not limited to) or physical structures must obtain written authorization from BSU or affiliates.
- When using social media, the student must comply with all other policies and procedures of BSU and the Nursing program.

4. **Compliance**

- Students shall receive notice of this policy at the beginning of the program and may receive periodic education on its application and use.
- In accordance with federal and state laws, regulations, and BSU entity-related policies, BSU reserves the right to monitor student/staff social media activities and maintain detailed reports of social media usage.
- Students found violating this policy may be subjected to corrective disciplinary action including but not limited to expulsion from BSU, criminal prosecution, or additional liability associated with other legal actions.
- Alleged violations require immediate reporting to the direct supervisor, Department chair, and/or the affiliate's human resources and risk management.

Established: 8/12

Revised: 5/15, 5/22

Reviewed: 5/18, 5/19, 5/20, 5/21

Student Concerns and Grievances

Bemidji State University is committed to the safety and equitable treatment of all members of the university community. The student complaint process outlined below is designed to ensure all concerns and complaints of members of our student body are handled in a prompt and fair manner.

Although we hope the vast majority of our students can complete their education without feeling that they have been treated in an unjust or inequitable manner, there will be instances

where student complaints are warranted and we are here to help resolve these issues.

BSU Policy Definitions

Grievance – A written claim raised by a student alleging improper, unfair, arbitrary, or discriminatory action by an employee involving the application of a specific provision of a university rule/regulation or a Minnesota State Colleges and Universities (MnSCU) Board policy or procedure. A grievance may also be about issues of institutional or program quality such as Bemidji State University’s compliance with HLC standards, or a claim of consumer fraud or deceptive trade practices.

Complaint – A claim by a student alleging improper, unfair or arbitrary treatment. A complaint may also be about issues of institutional or program quality such as Bemidji State University’s compliance with HLC standards, or a claim of consumer fraud or deceptive trade practices.

Appeal – A request for reconsideration of a grievance application of a policy or procedure.

Retaliation – Retribution of any kind taken against a student for participating in a complaint or grievance.

Student – An individual student, a group of students, or the student government.

Policies that govern the student complaint processes can be found [here](#). The [Office of the Provost and Vice President for Academic and Student Affairs](#) is available to advise and support students through the student complaint process.

Nursing Grievance Process

The Nursing program takes student complaints seriously. Our goal is to ensure students have access to transparent, due process that leads to an appropriate resolution of the complaint in a timely manner. The Nursing program will follow BSU’s policies with exceptions related directly to admission to the nursing program, safe patient care and professional behavior of a nurse.

Grievances and complaints related to Nursing policies or procedures will be heard by the department’s Student Admission, Progression and Concerns Committee (SAP-C). Students with progression, policy, or procedure concerns must meet with their faculty advisor and submit a written grievance in a timely manner, using the process outlined below. SAP-C will post its meeting dates online to facilitate planning for timely submission.

Faculty have authority in the courses they teach regarding course content, assignments and evaluations and will make the final decisions regarding these items. Examples include redoing assignments, rescheduling exams, questions regarding an evaluation or points awarded, test questions, and late assignments. These and other matters directly related to the course or coursework should be resolved with the faculty member(s) and may not be appealed through the Nursing program. Students wanting to contest a grade should follow the [Academic Grade Challenge Policy](#) in the *BSU Student Handbook*.

The full grievance process will be as follows:

Student discusses the complaint with their faculty advisor.



If a Student Grievance Form is appropriate, it should be submitted to the Nursing Office. This form (Appendix D) can be found at the Nursing website on the Student Handbook page. The submission should include: (a) description of the concern in 500 words or less, (b) steps taken to resolve the concern, and (c) any documentation necessary to support the outcome being sought (catalog description, course syllabus, handbook, Nursing website, etc.).



The Student Grievance Form must be submitted within the first two weeks after receiving the decision/situation being grieved.

Grievances filed during summer session will be reviewed as determined necessary by Chief Nurse Administrator, Department Chair, or SAP-C chair.



A review of the grievance by the SAP-C committee will occur at the next scheduled meeting after the grievance has been submitted. If a student would like to present their grievance in person, they must email the SAP-C chair to request an appointment time with the SAP-C committee. A student choosing to attend the meeting will have five minutes during the meeting to present the grievance. The student will receive a formal response with the committee's decision within six weeks of the meeting. The student's advisor, the department chair, and the dean will receive a copy of the committee's decision, and a copy will be placed in the departmental student file.



If the student still has concerns regarding the grievance after the SAP-C committee has made its decision, the student may appeal the decision to the Chief Nurse Administrator. The Chief Nurse Administrator is the final step in the appeal process.

Approved 1/5/18 Revised 5/22
Reviewed 5/19, 5/20, 5/21

Course substitutions are not permitted for nursing (NRSG) courses. Requests for course substitution and transfer equivalency for non-nursing courses will be processed according to the BSU process: <http://www.bemidjistate.edu/mybsu/degrees/course-substitutions/>.

Transfer equivalency requests for prerequisite courses must be formally approved by the Nursing program before the nursing application is submitted. It is the student's responsibility to discuss any anticipated requests with their advisor.

Revised: 6/17, 5/19, 5/21
Reviewed: 5/20, 5/21

Background Studies

Students who are currently enrolled must satisfactorily complete an annual background (both national and state) check as a condition of continuing enrollment in the Nursing program. **Clinical agencies may have requirements which include verifications other than those required by Nursing. In those situations, students will be required to meet those**

individual agency standards prior to clinical placement, which may result in additional costs to students.

Throughout the program it is expected that all students will self-disclose any occurrences which could result in a discrepancy (criminal charge or conviction) on a background check to the Department Chair and Nursing Clinical Coordinator at the time of the occurrence (within 14 days). If/when a student self-reports a new occurrence, they may be required to complete additional background checks. If/when a student's background check reports that they need direct supervision, they will be dismissed from nursing program.

Students may be dismissed from the program with any of the following:

- Students who fail to submit or do not pass the background check.
- Occurrences resulting in a discrepancy (criminal charge or conviction).
- If/when a student does not self-disclose, and an occurrence is found

The only time a background check would come to SAP-C is if the clinical site does not approve of clinical placement.

If a background check has discrepancies, the student may refer/contact the Board of Nursing from the student's state of residency to explore their options on how to continue in the nursing program.

Minnesota law requires that any person who provides services that involve direct contact with patients and residents at a facility licensed by the Minnesota Department of Health have a background study conducted by the state. An individual who is disqualified from having direct patient contact as a result of the background study, and whose disqualification is not set aside by the Commissioner of Health, will not be permitted to participate in a clinical placement in a Minnesota licensed facility. Failure to participate in a clinical placement required by the academic program could result in ineligibility to qualify for a degree.

A student who is disqualified for unsupervised provision of care as a result of a background study may request the Commissioner of Health to reconsider the disqualification. Individuals who request reconsideration are responsible for handling this step on their own.

If a person who is disqualified chooses not to request reconsideration, or the request is denied, the disqualification becomes final and the person cannot be placed in a clinical setting that involves direct contact with patients. If such a placement is part of the academic requirement for a student's program, the student will be unable to fulfill the academic requirements to successfully complete the program.

Students are required to complete the DHS NetStudy 2.0 online background study, including fingerprinting at an authorized facility, in order to maintain their enrollment in the Nursing program. Students will cover the cost of DHS study and the fingerprinting cost. Results of the study are sent to the student and must be uploaded to the clinical eligibility tracking system.

Students are also required to complete federal background studies through the approved vendor in order to participate in clinical experiences. International students or residents of Canada will complete the appropriate study in place of the federal study. Students are responsible for payment of the federal and international background studies. Results of the study are sent to the student and must be uploaded to the clinical eligibility tracking system.

Students must also complete a release of information form, giving the BSU Department of Nursing permission to share the results of the studies if requested by the clinical agencies to which they have been assigned.

If it is necessary for a student to step out of the program for an extended period (greater than 1 year), an additional background study must be completed for re-entrance to clinicals.

Revised: 6/17, 5/21, 5/22, 5/23

Reviewed: 5/18, 5/19, 5/20, 5/21

Clinical Eligibility

Students and the college may not waive health policy or immunization requirements set by clinical affiliates. Students who do not abide by clinical affiliate health policy or immunization requirements may be unable to attend clinicals, which may result in course failure, or failure to progress in the nursing program. Students must submit documentation of compliance with health policy requirements before specified deadlines. The health policy and immunization requirements set by our clinical affiliates may change at any time during the nursing program.

To establish clinical eligibility, students must submit the following documentation to the department's clinical eligibility tracking system:

1. State and federal background study results
2. Any and all paperwork required by the faculty or clinical facilities

Newly-admitted students without the required documentation on file by the deadline set by the department will be dropped and not permitted to begin the program. Failure to maintain clinical eligibility documentation throughout the program may result in inability to progress in the program.

Clinical sites may have additional eligibility requirements specific to their facilities, which students must meet in addition to those listed above.

Revised: 5/16, 5/17, 6/21, 5/21, 2/23

Reviewed: 5/18, 5/19, 5/20, 5/21, 5/22,

5/23

Course Policies

1. Active and relevant participation is expected by all students to make the course a success.
2. Test information and review:
 - a. Individual faculty will determine review of tests and final exams.
 - b. Item analysis will be completed by the instructors and addressed with the class as determined by the instructors.
 - c. Any questions regarding individual test items should be submitted via email to the instructor.
 - d. Students will be assigned nationally-normed proctored tests as appropriate. Expectations for performance will be outlined in the course syllabus.
3. It is the policy of BSU that administrative electronic mail communications between the University and University students shall be done using University-assigned electronic

mail addresses. It is the responsibility of each student to monitor the University-assigned electronic mail account for communications from the University. Students may expect a response from faculty within 48 hours during the workweek but should not expect faculty responses during weekends. If you have not heard back from a faculty within the timeframe, professional courtesy is to re-email the faculty.

4. Students are expected to check email daily as well as the D2L Brightspace course site for any class updates or postings. Many course materials will be provided in D2L for printing rather than as handouts in class. Students are responsible for all information posted in the D2L Brightspace course site, announced in class, and/or Bemidji State University email.
5. Any student who, because of a disability, may require special arrangements in order to complete course requirements should contact the instructor as soon as possible in order to make the necessary accommodations.

Revised 5/18, 5/21

Appendices

Appendix A: Baccalaureate Essentials Assignment Table: RN-BS Track

Essential	Course to demonstrate RN-BS	Assignment descriptions RN-BS	Standard (expected outcome)
<p>Essential I Liberal Education for Baccalaureate Generalist Nursing Practice <i>A solid base in liberal education provides the cornerstone for the practice and education of nurses.</i></p>	<p>3100 Concepts of Nursing and Health Care</p>	<p>Reflective journal Assignment objectives: 1. Synthesize previous liberal arts knowledge and methods into nursing knowledge and practice. 2. Demonstrate creativity and writing ability through reflective journaling.</p> <p>The student will complete assigned journal entries or reflections on selected learning concepts. This reflection should integrate previous general knowledge into nursing knowledge.</p>	<p>80% of the students will pass the assignment with a score of 75% or above.</p>
<p>Essential II Basic Organizational and Systems Leadership for Quality Care and Patient Safety <i>Knowledge and skills in leadership, quality improvement, and patient safety are necessary to provide high quality health care.</i></p>	<p>4210 Nursing Leadership and Management</p>	<p>Leadership & the QI change process Purpose: to foster the development of leadership skills required to lead an evidence-based quality improvement initiative by applying the Institute of Health Care Improvement Model to improve an actual patient safety issue from a leadership perspective. The student will choose a nursing leadership theory to employ along with the IHI Model for Improvement and work from the role of a process leader to identify the problem, select team members, develop an AIM statement, determine outcome, identify process and balancing measures for the proposed improvement, and outline a plan for change (PDSA: Plan Do Study Act).</p>	<p>80% of the students will successfully complete the certification requirements with a score of 75% or above.</p>
<p>Essential III Scholarship for Evidence-Based Practice <i>Professional nursing practice is grounded in the translation of current evidence into one's practice.</i></p>	<p>4260 Evidence, Practice, and Research</p>	<p>Evidence-based project The student will develop an evidence-based project in response to a clinical practice need identified in a place of employment or other clinical site. The project will include generation of a PICO(T) question, literature search and synthesis resulting in a practice change recommendation, systematic plan for implementation of the change, and creation of a poster illustrating the project.</p>	<p>80% of the students will pass the assignment with a score of 75% or above.</p>
<p>Essential IV Information Management and Application of Patient Care Technology <i>Knowledge and skills in information management and patient care technology are critical in the delivery of quality patient care.</i></p>	<p>3240 Information Management and Collaborative Communication</p>	<p>Consumer website evaluation Purpose: to analyze and evaluate health-related website for credibility, usability and accuracy for practice with patients who are consumers in the information age. It is critical that nurses are able to guide patients (consumers) in their use of the internet when they are seeking health-related information.</p>	<p>80% of the students will pass this assignment with a score of 75% or above.</p>

Essential	Course to demonstrate RN-BS	Assignment descriptions RN-BS	Standard (expected outcome)
<p>Essential V Health Care Policy, Finance, and Regulatory Environments <i>Healthcare policies, including financial and regulatory, directly and indirectly influence the nature and functioning of the healthcare system and thereby are important considerations in professional nursing practice.</i></p>	<p>3300 Health Care Policy, Finance, and Regulatory Environments</p>	<p>Health policy analysis paper This paper will analyze the United States health care system including health policy. Student will identify examples of health policy and/or regulation and describe how this policy influences the health care system. Student will discuss advantages, disadvantages, quality of health care, supply, demand, access to care, health equity issues, and disparities of health care delivery in the United States. Student will discuss health care finance including cost, affordability, and sources of payment. Included in this paper will be identification and discussion of advantages and disadvantages of a current national health care policy issue assigned by faculty.</p>	<p>80% of the students will pass the assignment with a score of 75% or above.</p>
<p>Essential VI Interprofessional Communication and Collaboration for Improving Patient Health Outcomes <i>Communication and collaboration among healthcare professionals are critical to delivering high quality and safe patient care.</i></p>	<p>3240 Information Management and Collaborative Communication</p>	<p>Interprofessional team paper Student will provide an analysis of an assessment of the group dynamics of an interprofessional or intra-professional group. We will be using videos of such groups. Everyone will watch the same videos. After watching these video meetings of healthcare professionals, students will compare and contrast various professional and/or discipline perspectives of the work of the team. Students will apply communication models and concepts along with teamwork elements. Students will reflect on the impact of the analysis on student's nursing practice.</p>	<p>80% of the students will pass the assignment with a score of 75% or above.</p>
<p>Essential VII (1) Clinical Prevention and Population Health <i>Health promotion and disease prevention at the individual and population level are necessary to improve population health and are important components of baccalaureate generalist nursing practice.</i></p>	<p>4116 Family and Population Health Nursing</p>	<p>Emergency Preparedness Modules Purpose: Community health nurses may be involved with emergencies or disasters in the communities they live and work in. Being prepared for emergencies and disasters is essential to responding in an effective manner. Students review the web-based modules and complete the questions from the modules using knowledge gained from the modules and reflection of concepts.</p>	<p>80% of the students will pass this assignment with a score of 75% or above.</p>
<p>Essential VII (2) Clinical Prevention and Population Health</p>	<p>4120 Family and Population Health Practicum</p>	<p>Community Assessment and Intervention Project Purpose: The CAP/CIP will provide an opportunity to assess a community and its population(s) to gain information to be able to identify real or potential problems for the population. The student will conduct community visits to develop a community assessment,</p>	<p>80% of the students will pass the assignment with a score of 75% or above.</p>

Essential	Course to demonstrate RN-BS	Assignment descriptions RN-BS	Standard (expected outcome)
		identify issues/problems, determine levels of prevention, specify interventions and evaluate a selected intervention based on the Public Health Intervention Wheel model.	
Essential VIII Professionalism and Professional Values <i>Professionalism and the inherent values of altruism, autonomy, human dignity, integrity, and social justice are fundamental to the discipline of nursing.</i>	3100 Concepts of Nursing and Health Care	Essential assignment Purpose: to engage in reflective thought regarding one's self-concept as a baccalaureate-prepared professional nurse. The student will evaluate and interpret their abilities regarding dimensions of professional practice based on the <i>AACN Essentials of Baccalaureate Nursing for Professional Practice</i> (2008). This self-reflection and evaluation will assist the student in articulating to self and others (sharing your voice) what it is to be a baccalaureate-prepared professional nurse.	80% of the students will pass the assignment with a score of 75% or above.
Essential IX Baccalaureate Generalist Nursing Practice <i>The baccalaureate-graduate nurse is prepared to practice with patients, including individuals, families, groups, communities, and populations across the lifespan and across the continuum of healthcare environments.</i>	4120 Family and Population Health Practicum	Community Assessment and Intervention Project Purpose: The CAP/CIP will provide an opportunity to assess a community and its population(s) to gain information to be able to identify real or potential problems for the population. The student will conduct community visits to develop a community assessment, identify issues/problems, determine levels of prevention, specify interventions and evaluate a selected intervention based on the Public Health Intervention Wheel model.	80% of the students will pass each assignment with a score of 75% or above.
Essential IX (2) Baccalaureate Generalist Nursing Practice <i>The baccalaureate graduate understands and respects the variations of care, the increased complexity, and the increased use of healthcare resources inherent in caring for patients.</i>	4260 Evidence, Practice, and Research	Evidence-based project The student will develop an evidence-based project in response to a clinical practice need identified in a place of employment or other clinical site. The project will include generation of a PICO(T) question, literature search and synthesis resulting in a practice change recommendation, systematic plan for implementation of the change, and creation of a poster illustrating the project.	80% of the students will pass the assignment with a score of 75% or above.
Essential IX (3) Baccalaureate Generalist Nursing Practice <i>The baccalaureate-graduate nurse is</i>	4120 Family and Population Health Practicum	Family Assessment Paper Purpose: Student will apply the nursing process by completing a comprehensive family assessment in the context of the family living in a community, identify family response to health and illness concerns, plan appropriate nursing	80% of the students will pass the assignment with a score of 75% or above.

Essential	Course to demonstrate RN-BS	Assignment descriptions RN-BS	Standard (expected outcome)
<i>prepared to practice with patients, including individuals, families, groups, communities, and populations across the lifespan and across the continuum of healthcare environments.</i>		interventions, and identify desired outcomes of care. Student will learn and apply a family assessment model with a self-selected family. This written paper is partially based on your interviews and visits with a family with whom you are acquainted and from course concepts and resources.	

Revised 7/7/14, 4/17, 5/18, 7/19, 5/21

Reviewed 3/16

Appendix B: Documentation of Unprofessional Behavior and/or Unsafe Practice

Student name (type or print legibly)	Student ID #	Course #
Semester and Year	Advisor name	Date of Incident(s)
Date this form was discussed with the student	Location of Incident(s)	

As documented below, this student has demonstrated professional and personal attributes that do not meet the standards of professionalism in clinical, classroom, lab or community settings, and safe clinical practice. The responsible faculty/academic staff will be taking the actions indicated below:

Faculty/Academic Staff: Check recommended action(s)

- Written Warning*
 Plan for Remediation
 Failure of Course
 Expulsion from BSU program

A maximum of 3 Documentation of Unprofessional Behavior and/or Unsafe Practice events will be grounds for expulsion from BSU programs.

Signature (faculty/academic staff) _____ Date _____

Faculty/Academic Staff: Check (✓) the appropriate categories below and provide specific, relevant documentation related to the behaviors of concern.

1. The student fails to meet the standards of professionalism from a biological, psychological, sociological and/or cultural standpoint.
 - Failure to carry out psychomotor/technical skills in a safe and/or professional manner.
 - Failure to carry out communicative skills in a safe manner.
 - Act of omission in the care of client.
 - Act of commission in the care of a client.
 - Displays mental, physical and/or emotional behavior(s) which negatively affect others.
 - Does not come to class or clinical prepared.
 - Other _____

Supporting documentation required: _____

2. The student lacks consistency in responsible preparation, documentation and/or communication.
 - Attempts activities without adequate preparation or assistance.
 - Demonstrates inaccurate or incomplete verbal/written communication.
 - Acts in such a way to create significant anxiety and/or stress to others.
 - Is verbally abusive and/or exhibits threatening, coercive or violent behavior toward anyone.
 - Is unable to achieve therapeutic nurse-patient relationships characterized by rapport, empathy and respect.
 - Violates the boundaries of professional nurse-patient/family relationships, e.g., engages in romantic or sexual relationships.
 - Is unable to maintain satisfactory relationships with others in clinical, university or community settings.
 - Other _____

Supporting documentation: _____

3. The student fails to practice within the boundaries of the Minnesota Nurse Practice Act, guidelines or the course syllabus, policies of the College of Nursing and the rules and regulations of the health care agency that is the site of the course.
- Is habitually tardy/absent
 - Is habitually tardy in submitting assignments.
 - Exhibits criminal behavior.
 - Is suspected of being under the influence of drugs and/or alcohol in class, clinical or university settings.
 - Dresses inappropriately and/or exhibits nonprofessional appearance/behavior.
 - Exhibits behavior that is offensive to others (sexist, racist, threatening, demeaning).
 - Needs repeated reminders of responsibilities consistent with the policies of the College of Nursing and/or clinical agency.
 - Other _____

Supporting documentation: _____

4. The student fails to meet American Nurses Association's *Code of Ethics and Standards of Practice*.
- Does not maintain confidentiality.
 - Demonstrates dishonesty.
 - Ignores unethical behavior of others.
 - Does not demonstrate respect for others.
 - Does not advocate for the rights of the patient.
 - Misrepresents or falsifies actions or information.
 - Other _____

Supporting documentation

5. The student lacks effort directed toward self-improvement.
- Is resistant or defensive regarding suggestions to improve.
 - Appears unaware of her/his deficiencies and the need to improve.
 - Does not accept constructive criticism or take responsibility for errors.
 - Is abusive or critical during times of stress.
 - Demonstrates arrogance.
 - Other _____

Supporting documentation: _____

Additional Incident description (including others involved) or comments:

Plan for Remediation (if indicated as an action on pg. 1)

Goal:

Completion Date

This section is to be completed by the student.

I have read this evaluation, discussed it with the course instructor, and received a copy.

Student signature

Date

My comments are: (optional)

Reviewed and received by Program Chair _____
Date

Follow-up _____
Date

Outcome: _____

The student's advisor, the department chair, SAP-C committee, and the dean will receive a copy of the documentation, and a copy will be placed in the departmental student file.

Appendix C: Student Grievance Form

To submit a complaint or grievance related to Nursing policies or procedures, please complete this form, providing as much information as possible. Attach additional sheets if necessary. **This form should not be used for a grade challenge or a concern related directly to course content or assignments.** Students can contest a grade by following the BSU [Academic Grade Challenge Policy](#).

NAME: _____ STUDENT ID # _____

Email: _____ Phone: _____

Street Address _____ City _____ State _____ Zip _____

Program: _____ Pre-Licensure _____ RN-BS Faculty Advisor: _____

Describe your situation or area of concern.

What steps have you taken to resolve the issue? Who did you talk to and when?

What outcome are you seeking?

Signature: _____ Date: _____

SUBMIT THIS FORM TO THE NURSING DEPT OFFICE

Office Use Only

What steps were taken to resolve this concern? (Attach notes from other staff if applicable.)

How was the concern resolved? Include dates of actions taken.

Date of follow-up contact with student: _____ By: (name of faculty) _____

Student Receipt and Acknowledgement

This handbook is neither a contract nor an offer to make a contract. The information enclosed is provided solely for the convenience of the students and readers.

The information in this Nursing Student Handbook is current as of the time of publication. However, policies are subject to change between editions. The Nursing program reserves the right to make changes at any time with respect to course offerings, degree requirements, services, policies, or any other subject addressed in this document. Amendments may be added as deemed necessary. Any revisions will take priority over the contents of this edition and will be communicated to students and effective immediately.

This handbook supersedes all previous versions of the *Student Resource Manual/Nursing Student Handbook*. Students are accountable for familiarizing themselves with its contents and for compliance with the policies and procedures contained within.